



# German Food and Drink Industry

## *Facts and Figures*

### 2009



Federation of German  
Food and Drink  
Industries

- April 15th 2009 -

Claire-Waldoff-Straße 7  
10117 Berlin  
[www.bve-online.de](http://www.bve-online.de)



## Key Figures of German Food and Drink Industry

	2008*	2007
<b>Turnover nominal</b>	<b>155.0 bn € (+5.6%)</b>	<b>146.8 bn € (+6.2%)</b>
Domestic turnover	112.6 bn € (+2.5%)	109.9 bn € (+4.1%)
Exports	42.4 bn € (+15.0%)	36.9 bn € (+13.2%)
<b>Turnover real</b>	<b>-0,9%</b>	<b>+1.5%</b>
<b>Share of Exports in total Turnover</b>	<b>27%</b>	<b>25%</b>
<b>Number of Companies</b>	<b>+0.2%</b>	<b>5,800</b>
<b>Number of Employees</b>	<b>+0.6%</b>	<b>530,000</b>
<b>Consumer Price Index total</b>	<b>+2.6%</b>	<b>+2.3%</b>
Consumer Price Index Food and Beverages	+6.0%	+3.8%
<b>Producer Price Index Food and Drink Industry</b>	<b>+6.6%</b>	<b>+4.1%</b>
<b>Producer Price Index Agriculture</b>	<b>+2.9%</b>	<b>+10.4%</b>

Source: Federal Statistical Office, BVE

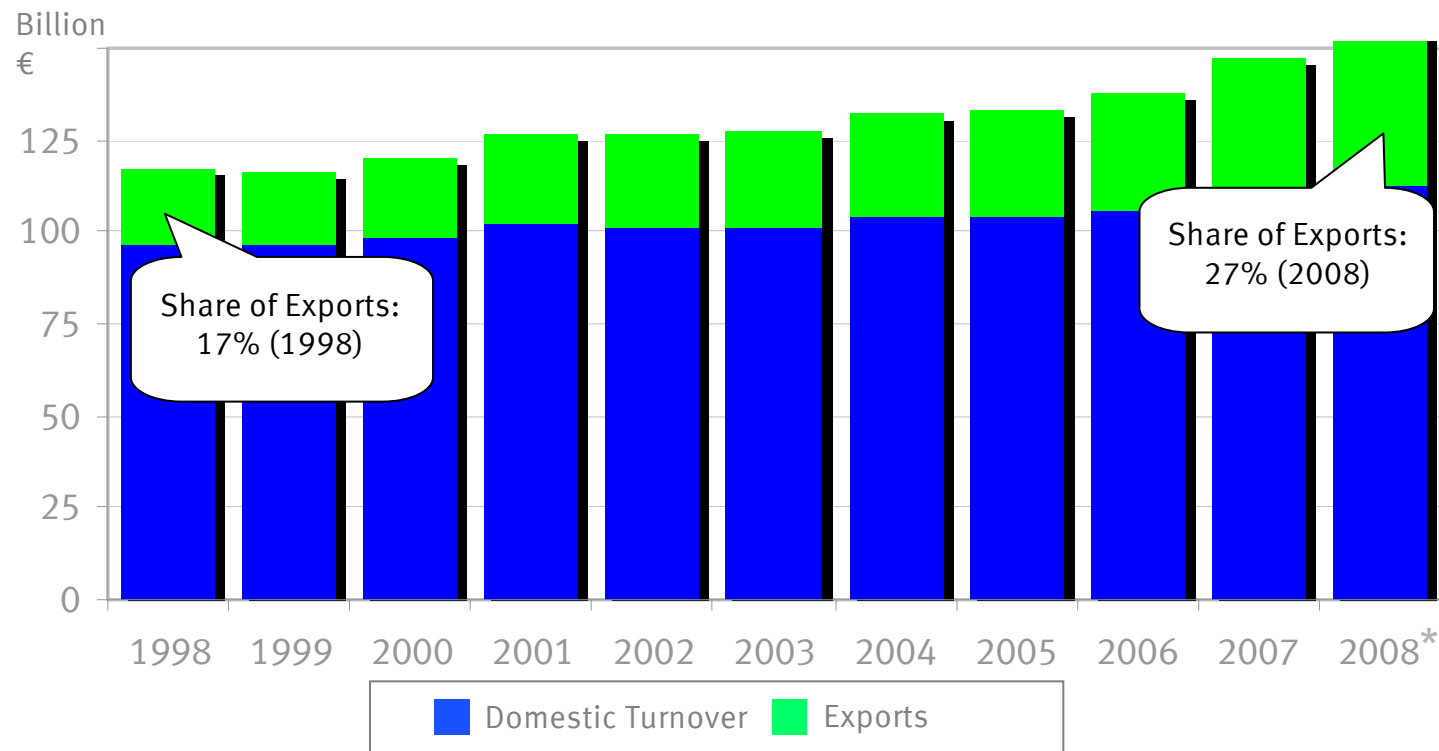
\*estimated

bn = billion

(compared to previous year)



## Domestic Turnover and Exports of German Food and Drink Industry

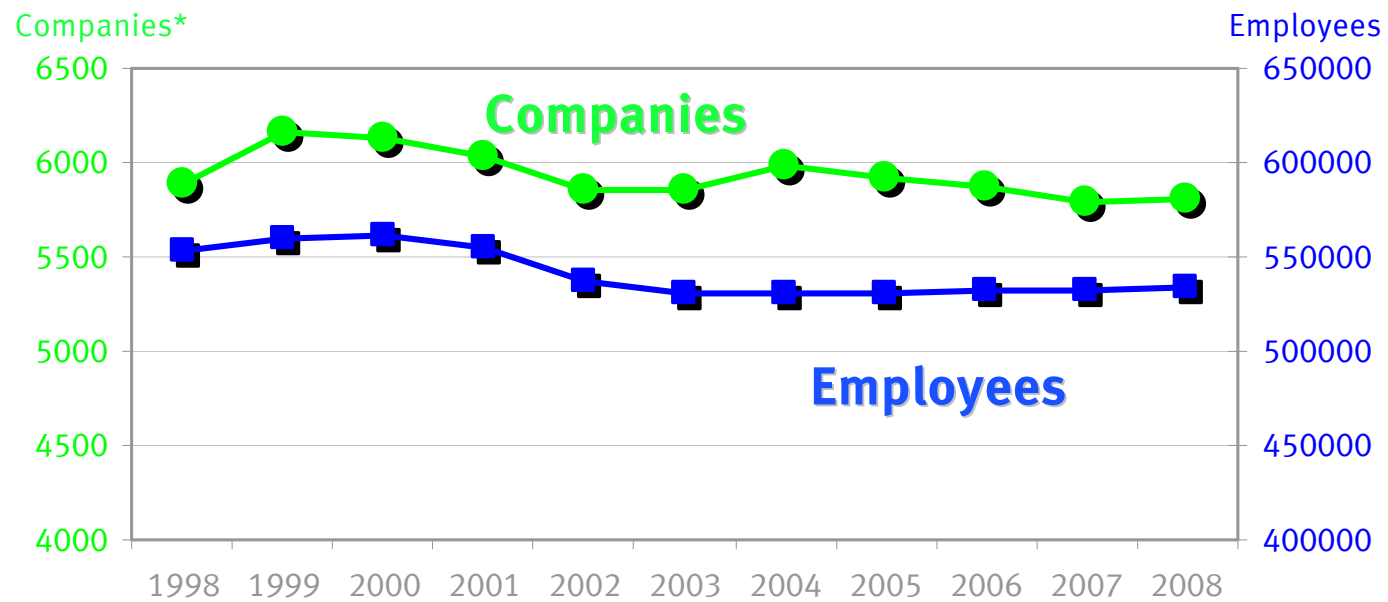


Source: Federal Statistical Office, BVE

\*estimated



## Number of Companies and Employees

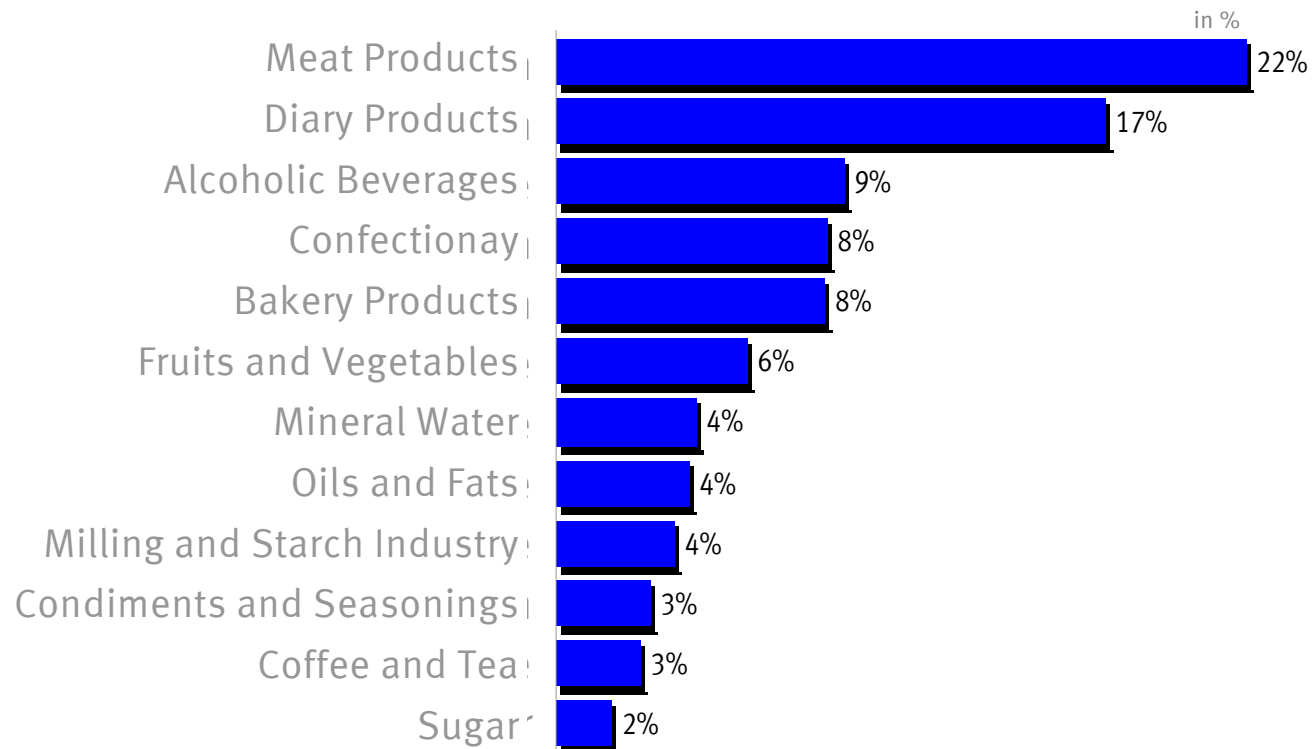


Source: Federal Statistical Office, BVE  
Methodical change in 2002, 2006, 2007

\* Companies with 20 or more Employees



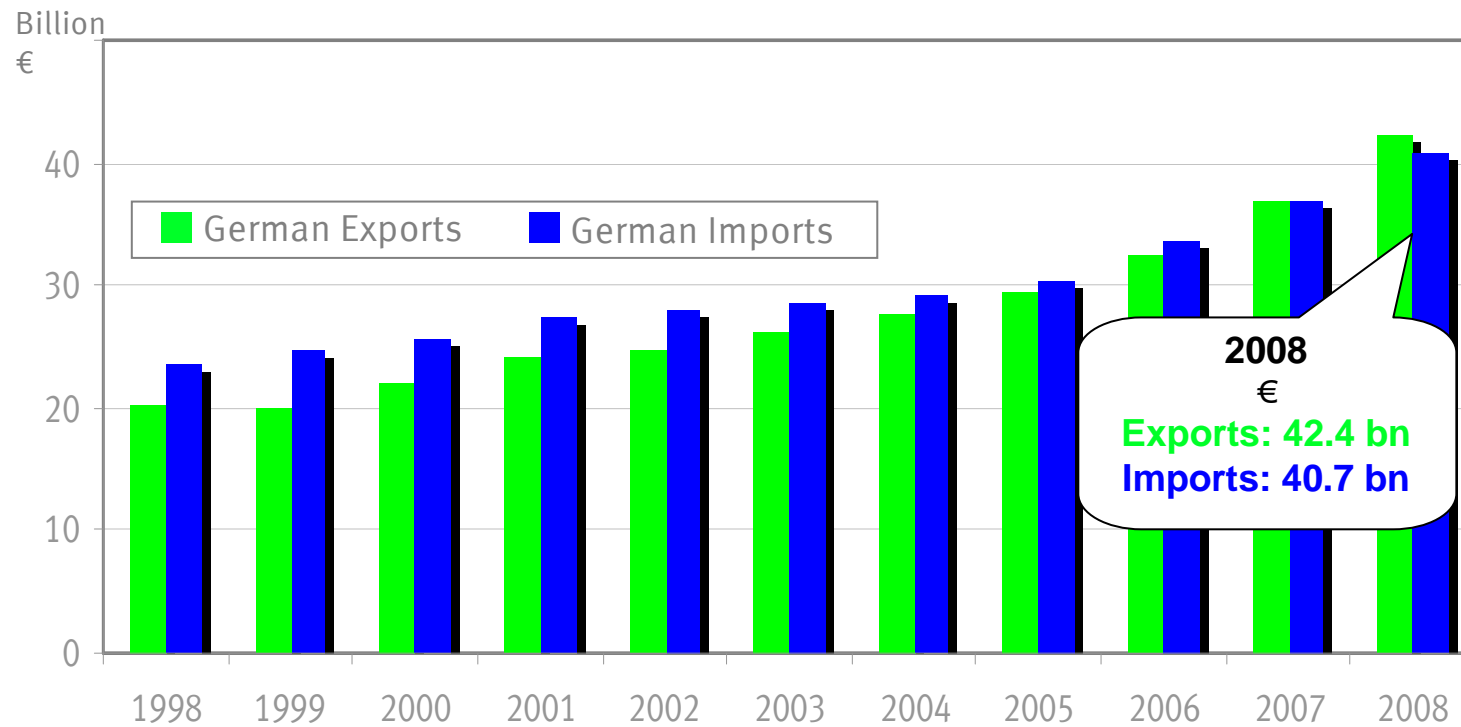
## Major Branches' Share of Total Turnover 2007



Source: Federal Statistical Office, BVE



## German Foreign Trade in Processed Food and Drinks

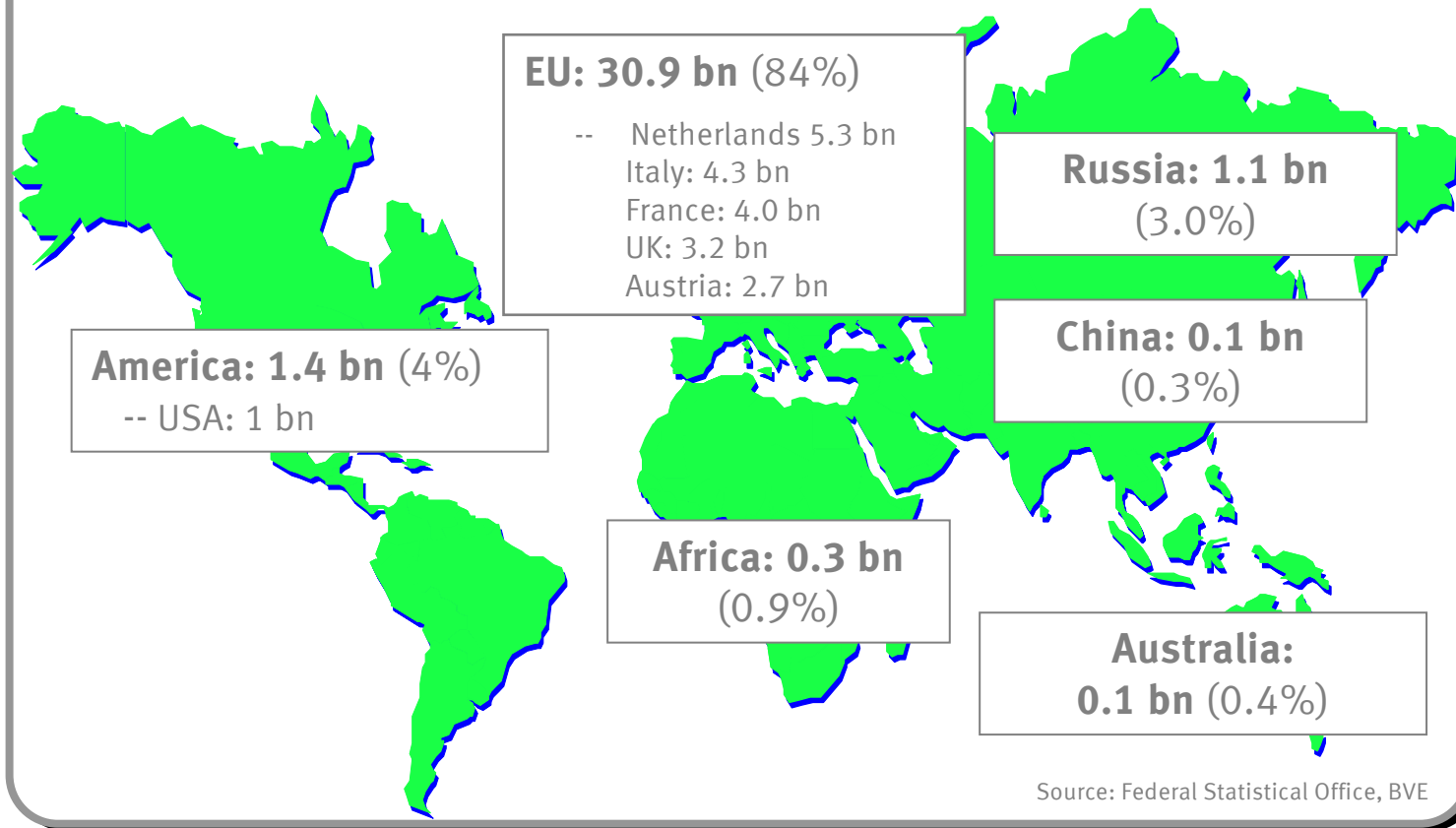


Source: Federal Statistical Office, BVE



## Regional Structure of German Exports 2007

€ , (Share of total German Exports of Processed Food and Drink)

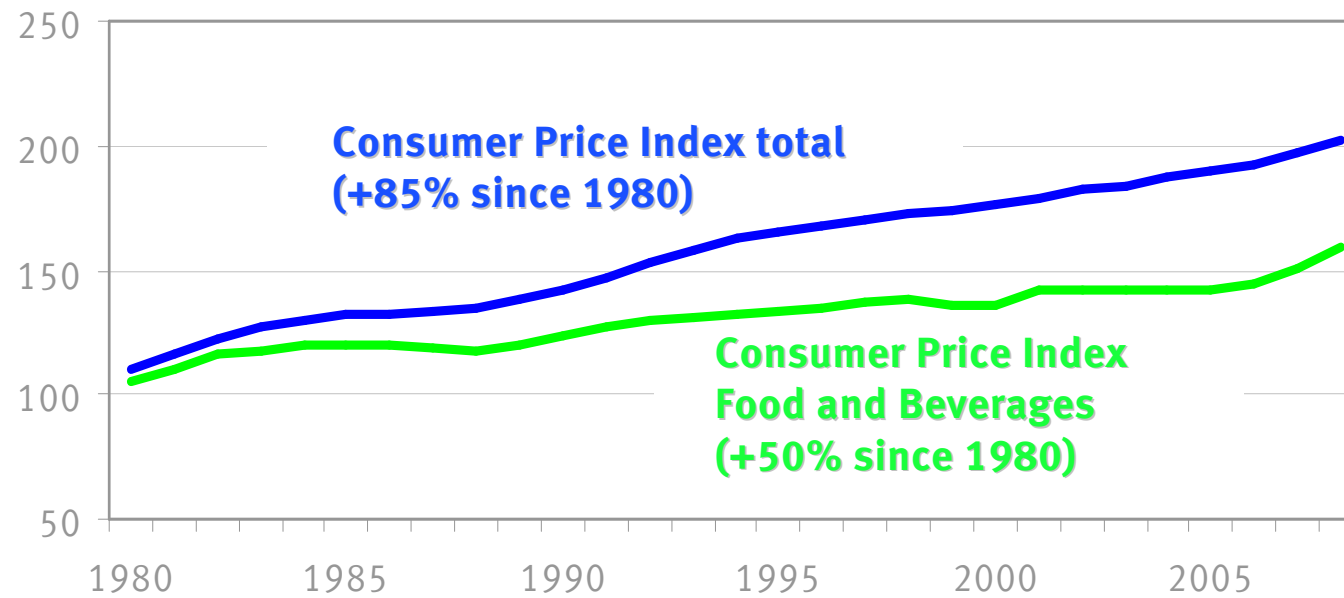


Source: Federal Statistical Office, BVE



## Consumer Price Index 1980-2008

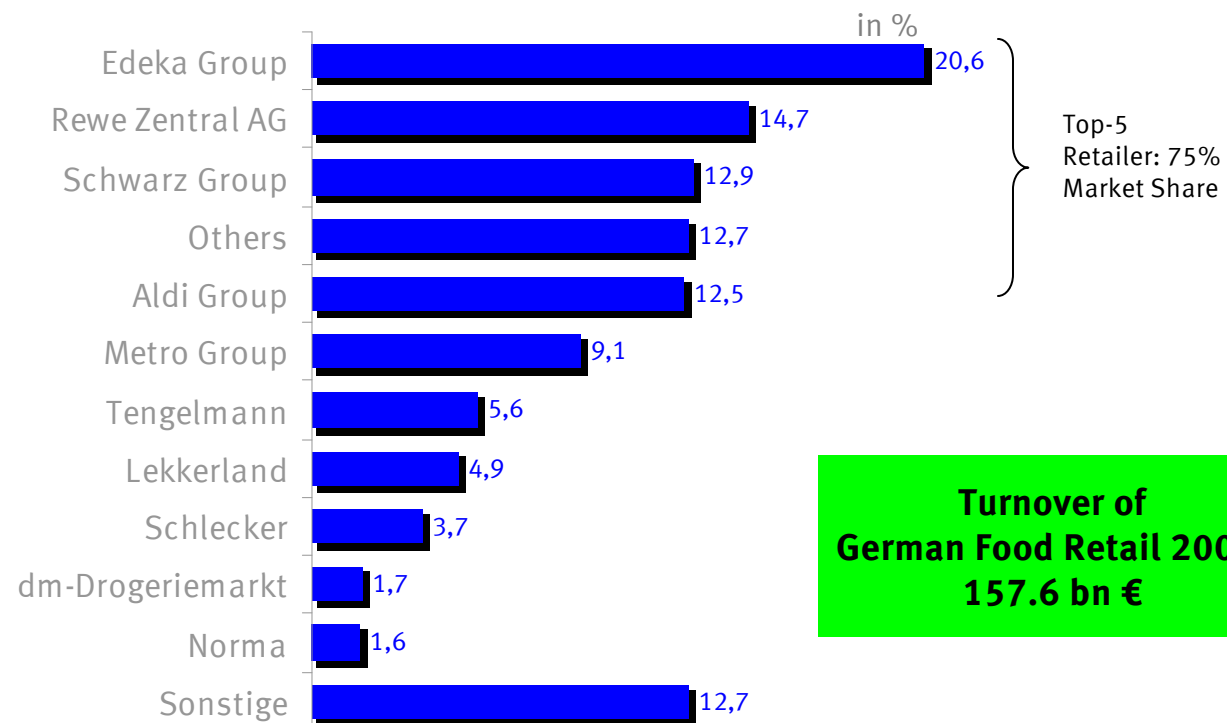
Index 1978=100



Source: Federal Statistical Office, BVE



### Top 10 of German Food Retailers 2007



Source: TradeDimensions